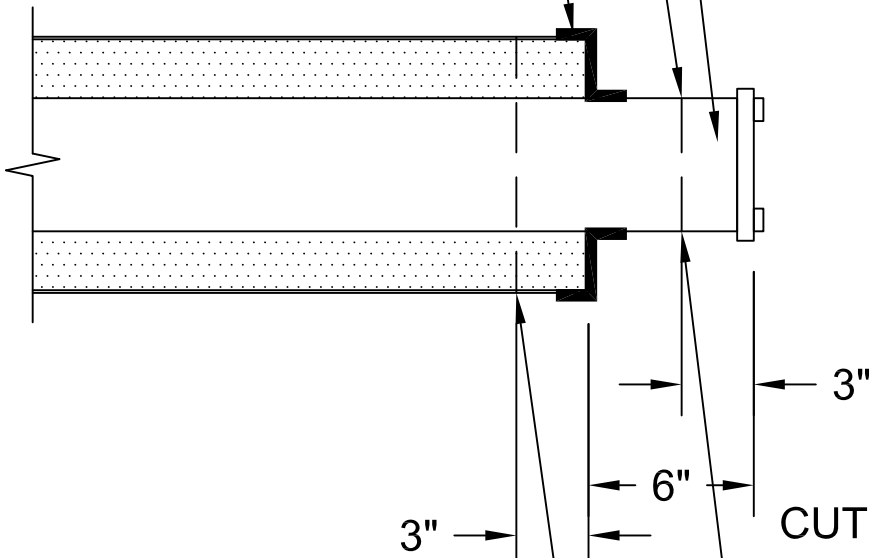


IF NEW CONNECTION WILL NOT BE MADE WITHIN ONE YEAR, EXPOSED STEEL CARRIER PIPE WILL BE FIELD COATED WITH ROSKOTE MASTIC TO A .250" THICKNESS

1/2" THICK STEEL PLATE WITH COUPLINGS & THREADED PLUGS FOR VENT/DRAIN & TESTING

SHRINK END CAP



CUT THE CARRIER PIPE BACK TO THIS POINT AND PREP THE END, WHEN THE NEW CONNECTION NEEDS TO BE MADE

CUT THE JACKET BACK TO THIS POINT WHEN THE NEW CONNECTION NEEDS TO BE MADE

FOAM INSULATED PIPE CAP FOR FUTURE DETAIL

N.T.S.

Rovanco®

20535 S.E. FRONTAGE RD. JOLIET, IL. 60431 (815) 741-6700

NAME: FOAM INSULATED PIPE CAP FOR FUTURE

APPR BY:
dk

DRAWN BY:
ad

DATE/REV:
10/26/2009

DWG NO:
FMP-SXPV-M-03